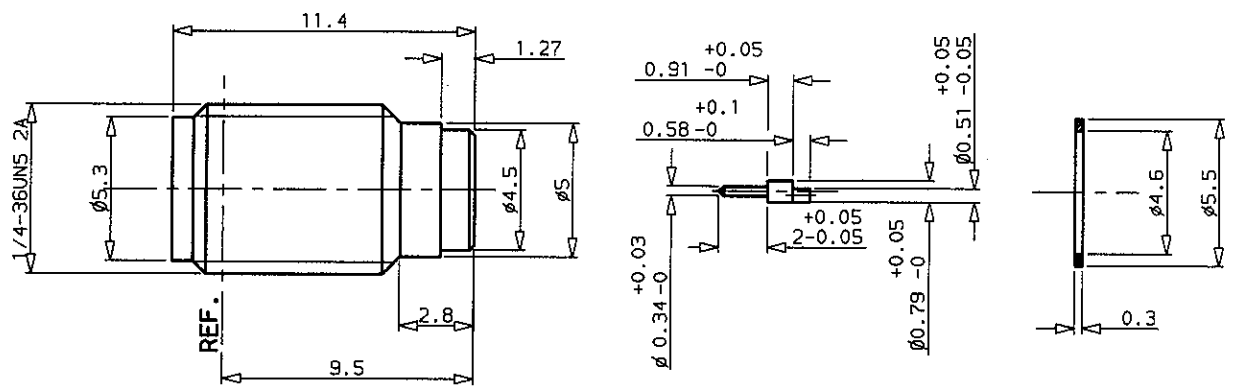


/usr2/DT.grange/fiches/s.Aftr125605
R-INC 6434



BURN IN : At the end of manufacturing, connector is submitted to a burn in test as follows:

Progressive increase of temperature from +25°C to +125°C. Maintain high temperature (+125°C) for 2 hours.

CHARACTERISTICS

NOMINAL IMPEDANCE	50 Ω	STANDARDISATION	MIL C 39012
FREQUENCY RANGE	DC-18 GHz		-
TEMPERATURE RATING	-55/+150 °C		-
VSWR	1.20 Max	MATING TORQUE RECOMMENDED	7.088-8.86 Inch. Lb 80-100 cm. N
RF INSERTION LOSS	0.2 dB Max	CENTER CONTACT RETENTION	
VOLTAGE RATING	450 Vrms	Axial force - mating end	3.375 Lb min 15 N min
DIELECTRIC WITHSTANDING VOLTAGE	1000 Vrms	Axial force - opposite end	3.375 Lb min 15 N min
INSULATION RESISTANCE	5000 M Ω	Torque (Max)	NA inch. oz NA cm. N
HERMETIC SEAL	6.10 ⁻⁷ cc/s cm ³ /s	SLIDING CONTACT (Backward)	
-	-	Sliding force	.044 Lb min 20 g min .22 Lb Max 100 g Max

CONSTRUCTION

CONNECTOR PARTS	MATERIALS	FINISH
Body	Stainless steel	Passivated
Center contact	Beryllium copper	Gold over copper
Sliding contact	Brass	Gold over copper
Insulators	PTFE	-
Gasket	Brass	Gold over nickel
-	-	-
-	-	-
-	-	-
-	-	-

ISSUE	REVISION No	DESCRIPTION	BY	DATE

Initiated on	12-10-88		The information given here is subject to change without notice. Design changes may be in order to improve the product.
Superseded on	05-12-89		

/usr2/DT.grange/fiches/s.Afmp2R125605371
R.ENC 6M34

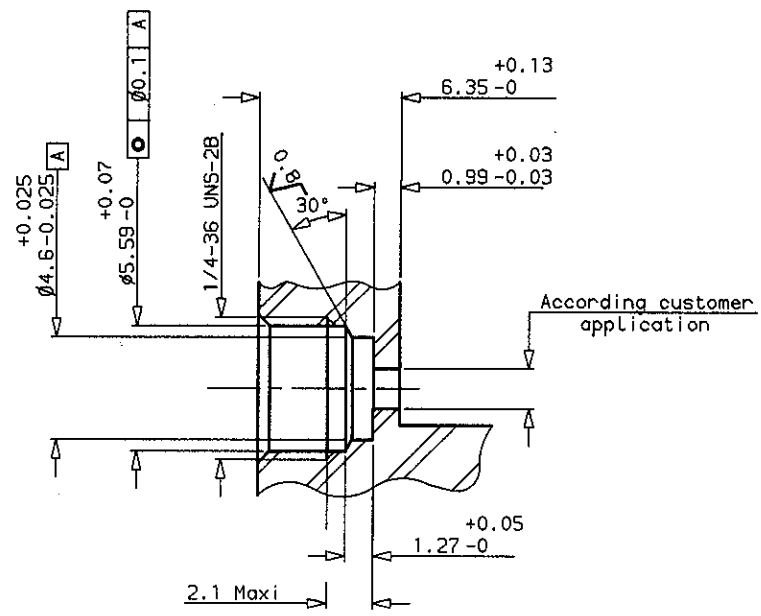


- TECHNICAL DATA

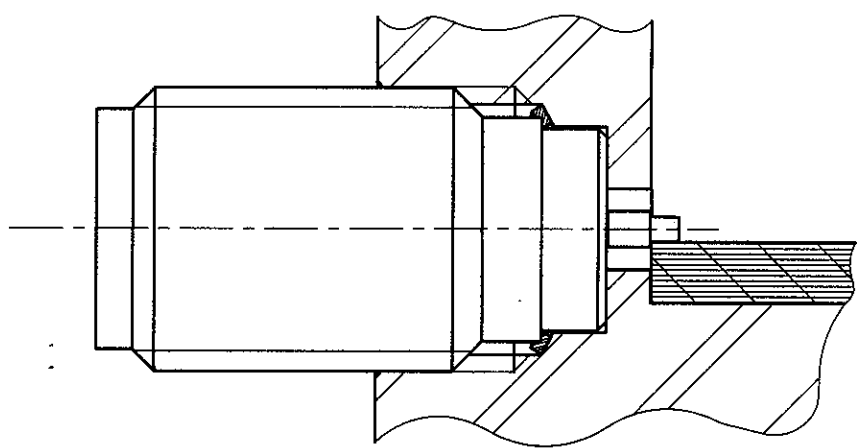
R 125 605 371	
Issue :	8949
SERIES:	SMA
Page 02/02	

NON GLASS HERMETIC RECEPTACLE , SCREW-IN TYPE

PANEL DRILLING



RECOMMENDED MOUNTING HOLE DETAIL



Assemble metal gasket onto connector. Screw both parts into the housing.
Tighten the connector up to 25 Inch-Pounds torque (use special tooling set RADIALL R282 341 000).

ISSUE	REVISION No	DESCRIPTION	BY	DATE

Initiated on 12-10-88
Superseded on 05-12-89

The information given here is subject to change without notice. Design changes may be in order to improve the product.

